



Barn Mead | | Harlow | CM18 6SY

£1,050 Per Month

 clarknewman

Barn Mead |
Harlow | CM18 6SY
£1,050 Per Month

A LARGE ONE BEDROOM GROUND FLOOR in excellent condition. The property comprises of a spacious entrance hall, modern fitted kitchen with a range of wall and base units, large lounge offering a media unit, generous sized double bedroom and family bathroom suite. Other features include a communal garden, exterior storage cupboard, gas heating via radiators and UPVC double glazed windows throughout. This property is available unfurnished mid Jan. This is a non-smoking property.

- One Bedroom
- Well Presented
- Council Tax Band: B
- Ground Floor Flat
- Available NOW
- EPC Rating: D

Entrance Hall

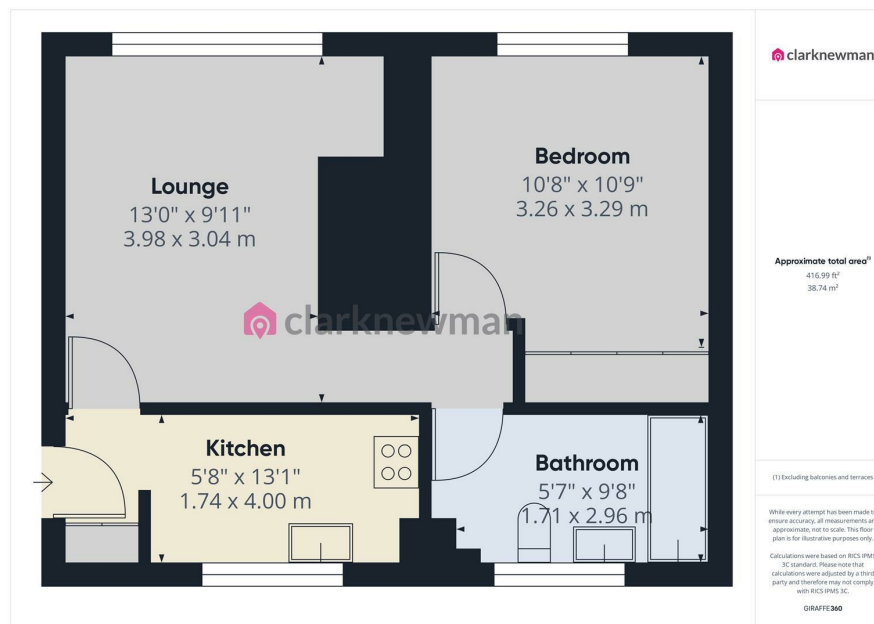
Kitchen
9'9" x 5'7" (2.97 x 1.7)

Lounge
14'2" x 12'3" (4.32 x 3.73)

Bedroom
10'10" x 10'2" (3.3 x 3.1)

Bathroom
5'7" x 9'8" (1.71 x 2.96)

Local Area



Energy Efficiency Rating		
	Current	Potential
Very energy efficient - lower running costs		
(92 plus) A		
(81-91) B		
(69-80) C		
(55-68) D	67	74
(39-54) E		
(21-38) F		
(1-20) G		
Not energy efficient - higher running costs		
England & Wales	EU Directive 2002/91/EC	

Equity House
4-6 Market Street
Harlow
Essex
CM17 0AH
01279 400444
hello@clarknewman.co.uk
www.clarknewman.co.uk